

# TUUCI®

*made in miami*



TUUCI® Equinox Double Chaise Lounge  
installation instructions

*Note: This installation may require 2 people.*

**Step 1.**

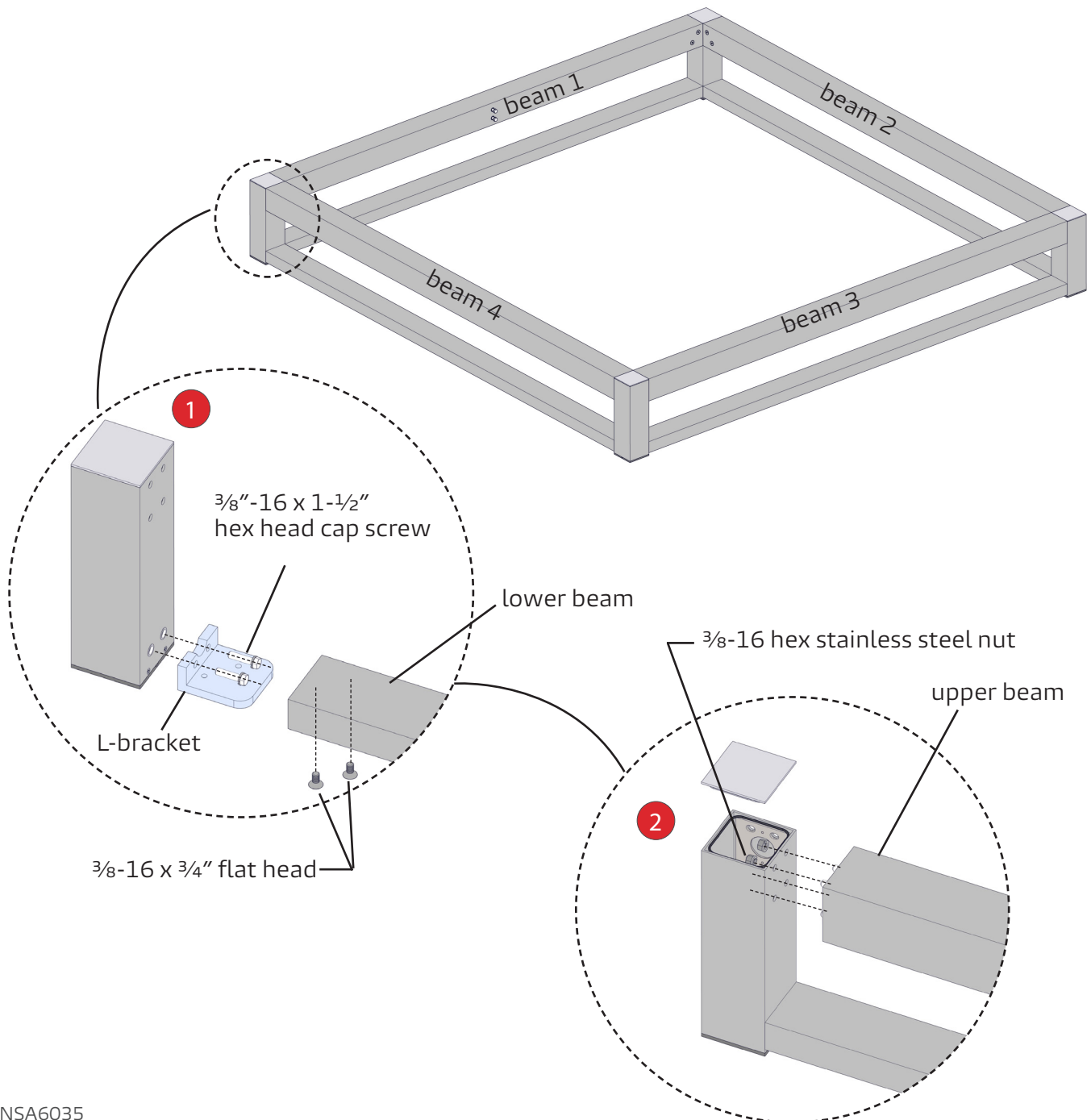
Remove the pre-installed  $\frac{3}{8}$  -16 x  $\frac{3}{4}$ " flat head screws from the lower beam and remove  $\frac{3}{8}$  -16 x1-  $\frac{1}{2}$ " hex head cap screws from the leg. Mount L-bracket to the leg.

Then slide the 2"x4" lower beam over the L-bracket and tighten screws from the bottom.

**Step 2.**

Remove the (4) pre-install  $\frac{3}{8}$ -16 hex stainless steel nuts from the upper beam and mount to the leg by tightening the 4 nuts from the inside of the leg.

Repeat steps 1 and 2 for all corners.



**Step 3.**

Remove the pre-installed  $\frac{3}{8}$ "-16 x  $\frac{3}{4}$ " flat head screws from the center beam and remove  $\frac{3}{8}$ "-16 x 1- $\frac{1}{2}$ " hex head cap screws from upper beams 1 and 3. Mount L-bracket to upper beam 1.

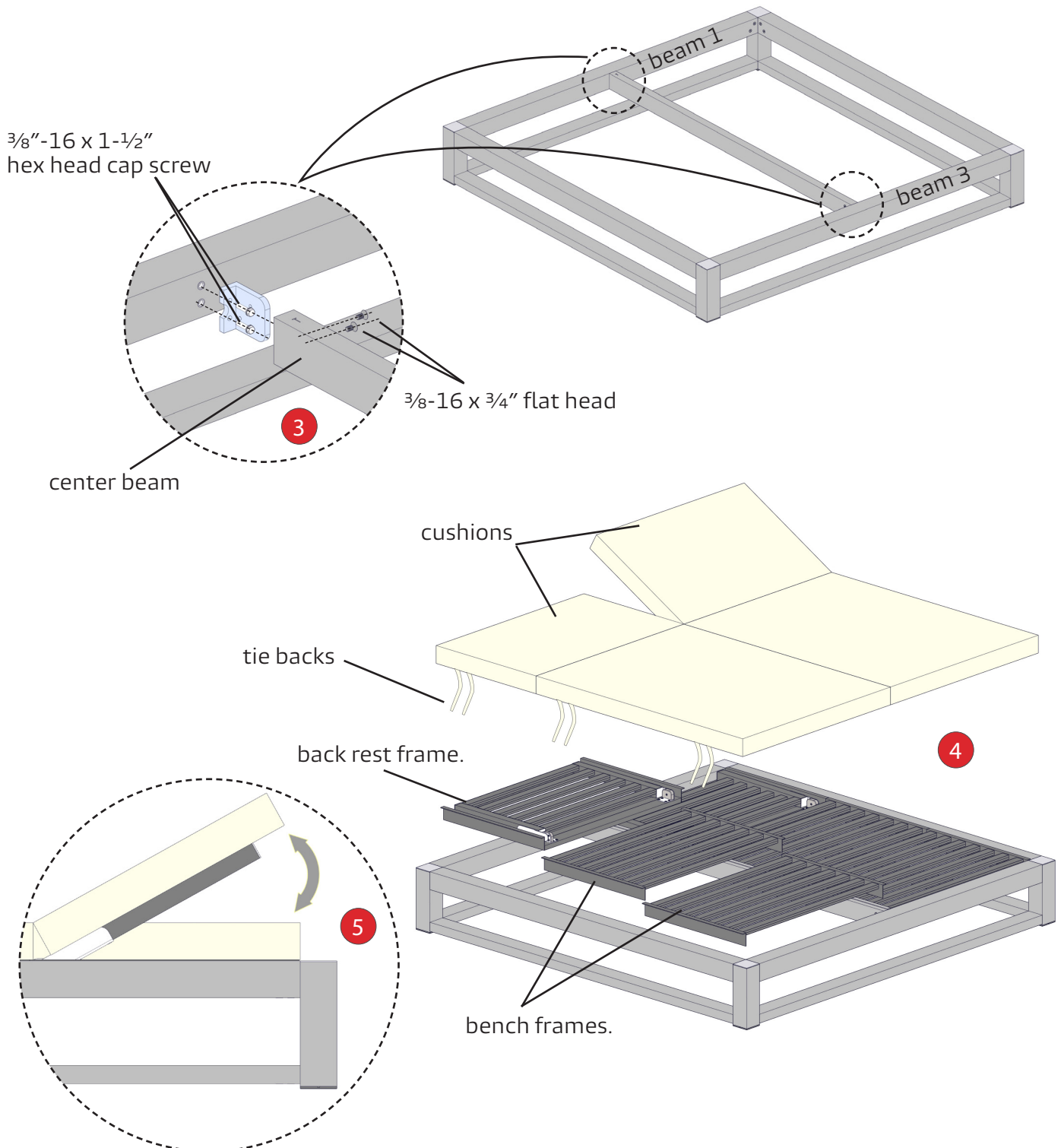
Then, drop center beam over the L-bracket and tighten the screws from the side.

**Step 4.**

Drop-in (2) back rest frames, (4) bench frames and (2) Cushions. Tie cushions to bench frames.

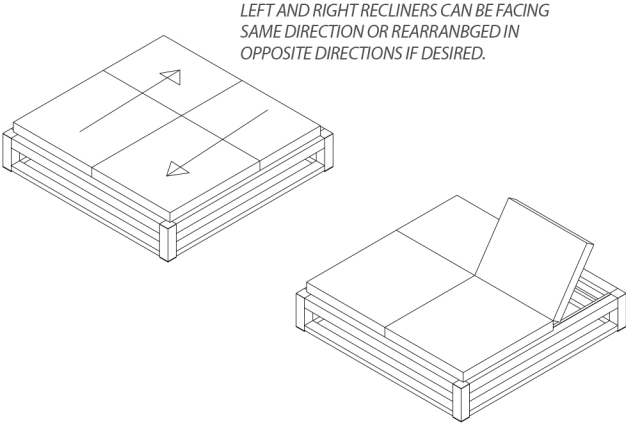
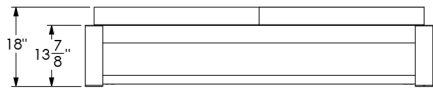
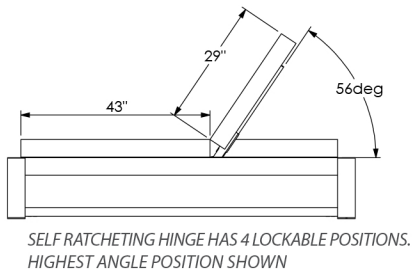
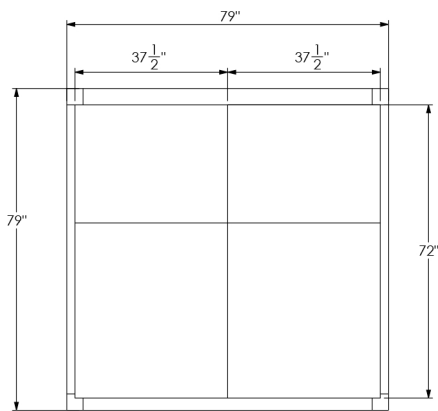
**Step 5.**

Lift up back rest to adjust to the desired angle.



TUUCI equinox double chaise lounge

6'7" X 6'7"



available finish options

powder coat



aluma-TEAK

